

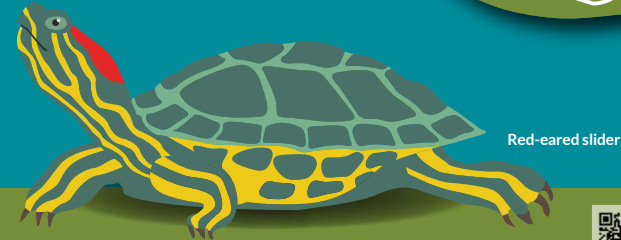


Calling All Kids! Special Places to Play

Bluff Lake is for the plants and wildlife—and you.
Look for Nature Play areas as you explore today.
They're meant specially for kids and families.

What to do at these Nature Play stations?
¿Qué hacer en estas estaciones de Nature Play?

- ▶ **Get off the trail (but only at these special zones).**
Sal del sendero (pero solo en estas zonas especiales).
- ▶ **Observe what's around, using all your senses.**
Observa lo que hay alrededor, usando todos tus sentidos.
- ▶ **Can you think like an animal?**
¿Puedes pensar como un animal?



Red-eared slider



Red-tailed hawk

Hawk-Eye View

Hey kids—Climb up into this hawk nest and check out the view! If you were a bird, you could fly up.



Wildlife Refuge ~ Outdoor Classroom

This project funded by



Para español, vea esta página
web: blufflake.org/np-espanol

This experience recommended for children
over age 5. Play at your own risk.

